



Food forests to improve water quality and build community resilience

Community workshop for tree planting at SUNY-Oswego



Who we are:

- Environmental non-profit in Syracuse
- Initiated sewage cleanup of Onondaga Lake
- Today focused on agroforestry, urban forestry, green infrastructure, and other water quality and restoration projects
- "Bridging organization"

aslf.org



urban rain garden in Syracuse

Recent Oswego County Partners & Collaborators:

- City of Fulton
- Fulton Garden Club
- Fulton Block Builders
- Fulton Public Library
- SUNY-Oswego
- Rice Creek Field Station
- Bishop's Commons at St. Luke
- Village of Pulaski
- Pulaski Public Library
- Springbrook Apartments
- Pulaski United Methodist Church
- Oswego County



Community tree planting in Fulton, NY

aslf.org

Great Lakes Restoration Initiative (GLRI)

- Started in 2010
- Multi-agency effort at federal level
- Goal to improve and sustain water quality of the Great Lakes as a resource for all



Lake Ontario



SUNY-Oswego

Great Lakes
RESTORATION



We are here!

Great Lakes Restoration Initiative (GLRI)

Our project will:

- Plant about 400 native trees & shrubs at two locations in Oswego County
- Eventually result in the interception of about **50,000 gallons annually** of stormwater in first 20 years, possibly **250k-500k gallons** when trees fully grown!
- Engage community members, students, residents, and partners in educational events & tree planting
- Build urban **food forests** locally
- Help bring **Centennial Arboretum** to Level II status



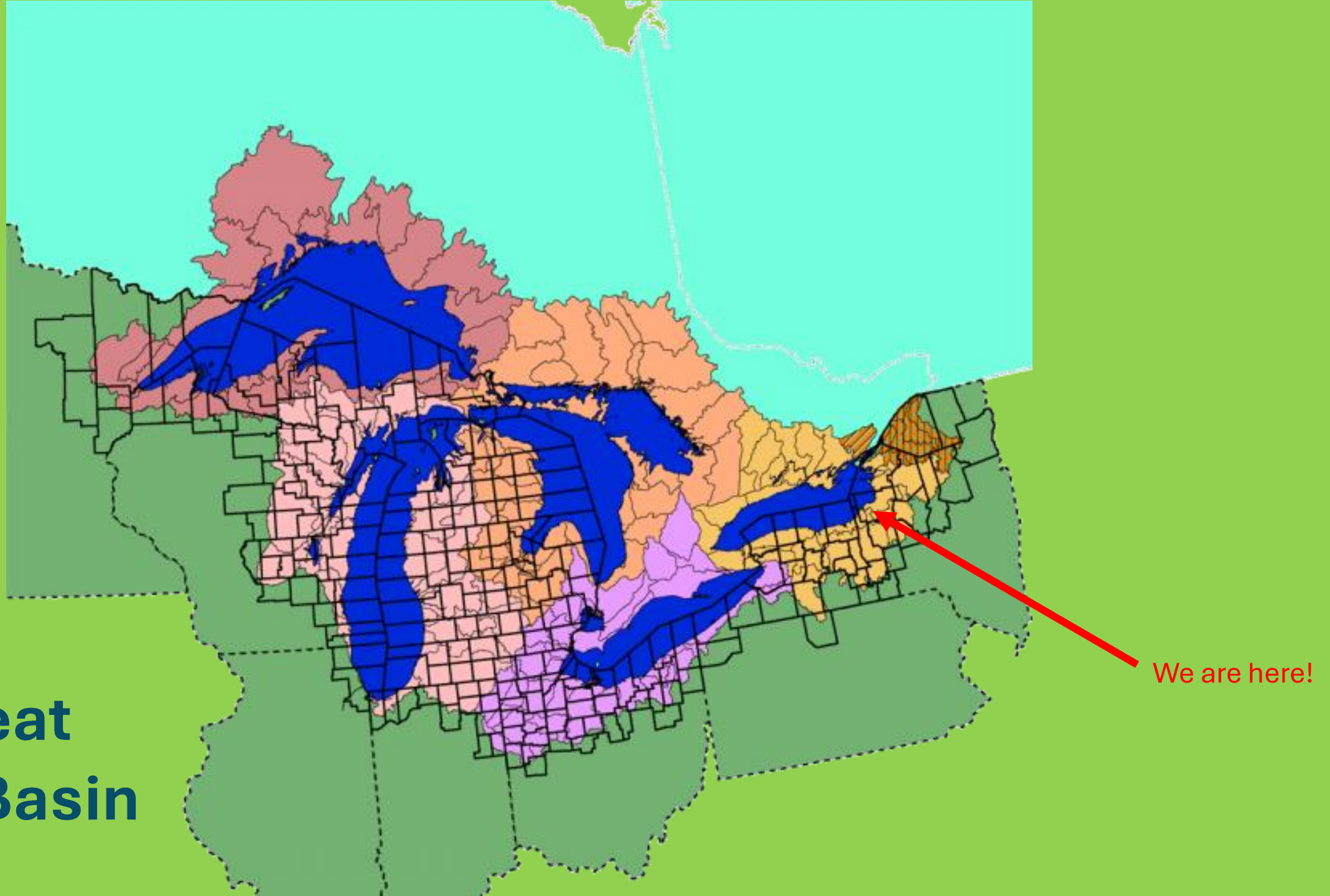
Great Lakes
RESTORATION



Maple-beech forest in the Lake Ontario basin

We are here!

The Great Lakes Basin



We are here!

GLRI Partners (this project):

- St. Luke's community
- SUNY-Oswego
- Catholic Charities of Onondaga County
- USDA Forest Service



aslf.org

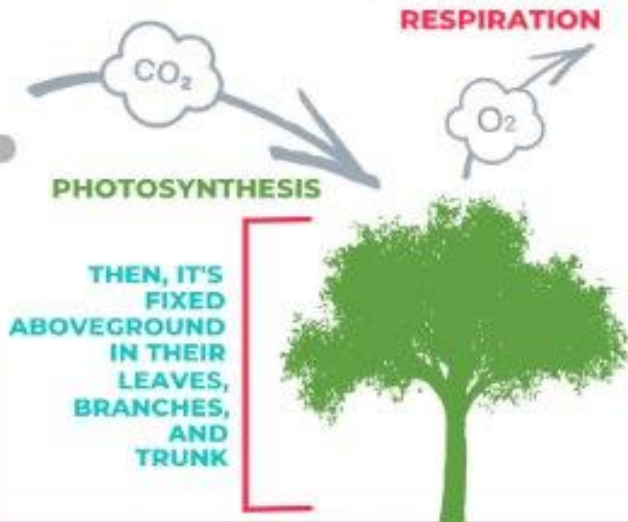
USDA is an equal opportunity provider, employer, and lender.

Trees & Environmental Health

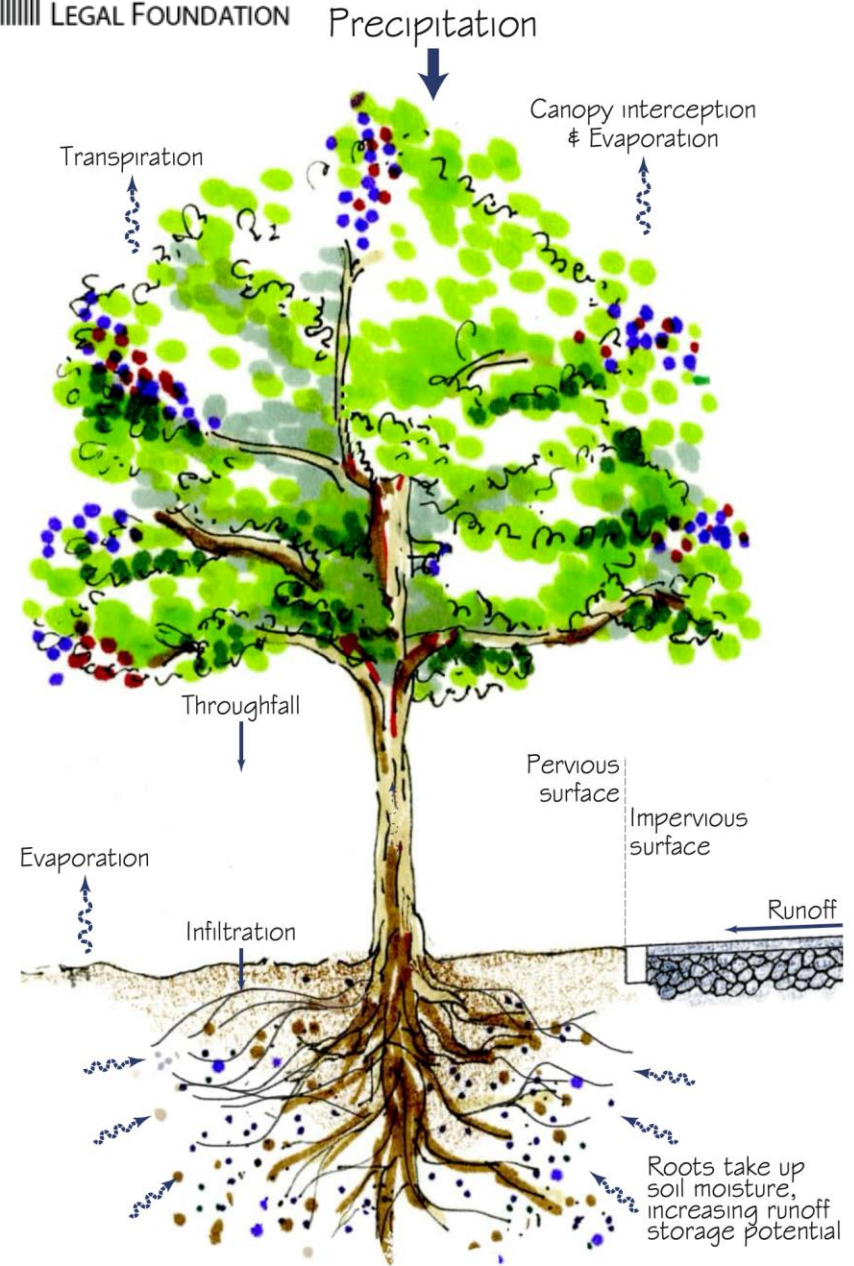


HOW HEALTHY TREES SEQUESTER CARBON

CARBON IS RELEASED INTO THE ATMOSPHERE AND ABSORBED BY TREES VIA PHOTOSYNTHESIS



AND, IT'S STORED BELOWGROUND IN ROOTS AND SOIL ORGANIC MATTER WITH THE HELP OF MICROBES



Ways a tree helps with stormwater management
(Illustration by Atlantic States Legal Foundation)



Alley cropping/Intercropping



Forest Farming

Food Forest

Fulton, NY



Windbreak



Silvopasture



Riparian Buffer

The six types of temperate agroforestry

Agroforestry & Food Forests

What is a food forest?



Syracuse, NY



Fulton, NY



Pawpaw fruit

Expanding Centennial Arboretum



Reaching
Level II
Arboretum
accreditation

The screenshot is divided into two main sections. The left section shows a list of details for the arboretum's accreditation:

- ← Level I
- Accreditation Level: Level I
- Arboretum: SUNY Oswego Centennial Arboretum
- Type: Uni/Coll

The right section is a map from Google My Maps showing the location of the arboretum in Oswego, NY. A yellow tree icon marks the location. The map includes labels for nearby towns like Sterling, Fulton, and Syracuse, as well as major roads like I-19 and I-190. A copyright notice is visible: "ThePhoto by PhotoAuthor is licensed under CCYSA."



Expanding Centennial Arboretum

Reaching Level II Arboretum accreditation

Requirements

- **Diverse Collection:** Maintain at least 100 species of trees or woody plants.
- **Collections Policy:** Implement a comprehensive collections policy.
- **Regular Evaluation:** Conduct ongoing evaluations of the arboretum.
- **Collections Activities:** Participate in plant trials, maintain a herbarium, and more.
- **Collections Manager:** Employ a dedicated collections manager or curator.
- **Educational Programs:** Offer extensive tree-related educational programs.
- **Public Events:** Provide public access and host tree-related events.
- **Community Engagement:** Engage with the community through outreach and citizen science.



Vanderbilt University



UMASS Lowell Arboretum



University of Rochester

What benefits do **food forests** provide?

- **Greenspace for stress relief**
- **Nutrition & medicine**
- **Cleans the air & water**
- **Reduces urban heat island**
- **Creates habitat & food for wildlife**
- **Promotes social interaction & exercise**
- **Beautifies the community**
- **Psychological & spiritual connection**
- **Builds sense of place**

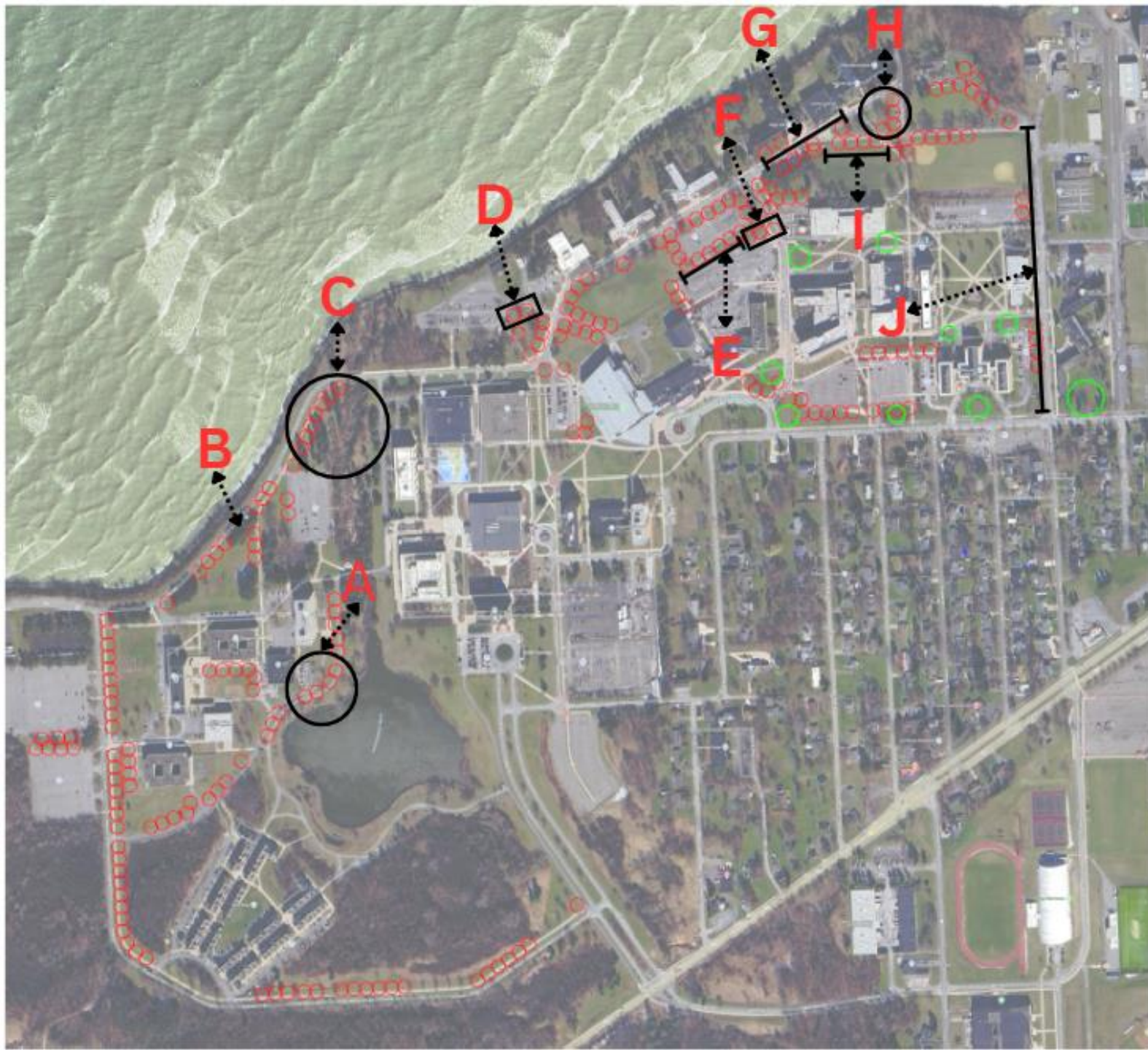
And by expanding the arboretum...

- **Research opportunities**
- **Germplasm preservation**



Serviceberries,
Syracuse, NY





Draft Planting Plan & Site Analysis

- A. Existing Trees
- B. Utility
- C. Experiment
- D. Existing Trees
- E. Slope
- F. Snow Bank
- G. Snow, lights, signs
- H. Density
- I. Light Poles
- J. Power Lines

-  Preliminary Tree Planting Locations
-  Preliminary Planting Locations for the Centennial Arboretum Expansion

SUNY Oswego
GLRI Preliminary
Planting Plan

Total Trees: 223
Total Shrubs: TBD



Some species under consideration:

Landscape trees



Bur oak



River birch



Eastern redbud



White oak



**Black
tupelo**



Black cherry

Some species under consideration: Fruiting trees & shrubs



Pawpaw



American persimmon



Blueberry



Serviceberry



Volunteer Opportunities – We need your help!

Please sign in and leave your
email address if you haven't
already



Check our social media & website for updates...



facebook.com/ASLF1982



[aslf1982](https://instagram.com/aslf1982)



aslf.org/oswegoglri

Email: pharris@aslf.org

Discussion & Feedback

